



LEOPARD IMAGING INC

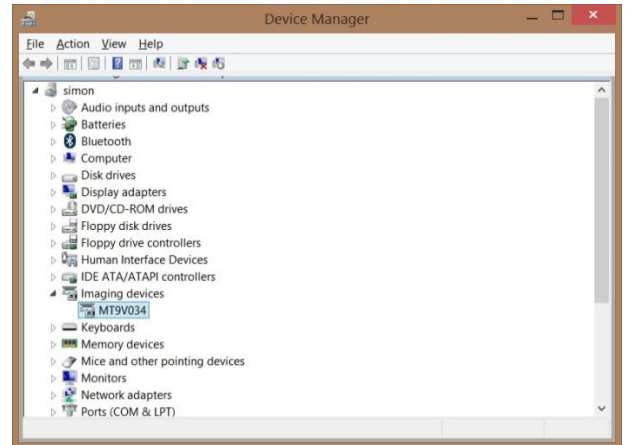
# LI-USB30-AR0144X SETUP GUIDE

## Install Driver

- 1) Connect the USB 3.0 cable to camera.
- 2) Plug the USB into USB 3.0 port on PC.
- 3) PC will search and install driver automatically.



- 4) After install the driver, camera device can be found in Device Manager.



## PC Software

### ❖ USB3.0 Camera Tool

- 1) Download CameraUSB30.zip from link: <https://www.dropbox.com/sh/yyp5zjdxhowb7bq/gwlh4ANxdr>
- 2) Uncompress the package.
- 3) Connect the camera to PC.
- 4) Open "CameraTool.exe".

**Note:** We also have SDK for Camera Tool software, and it can be downloaded from link below.

[https://www.dropbox.com/sh/49cpwx0s70fuich/2e0\\_mFTJY](https://www.dropbox.com/sh/49cpwx0s70fuich/2e0_mFTJY)

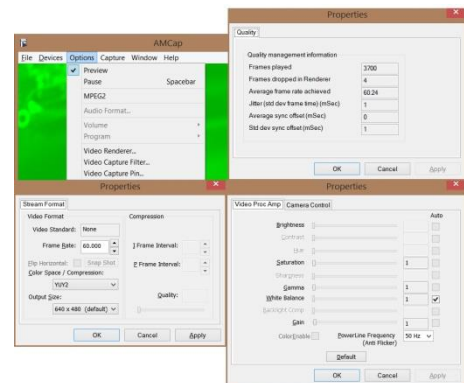


### ❖ AMcap

- 1) Download AMcap from link below.

<http://noeld.com/programs.asp?cat=video>

- 2) Install AMcap.
- 3) Run AMcap after connecting the camera to PC.



Leopard Imaging Inc.

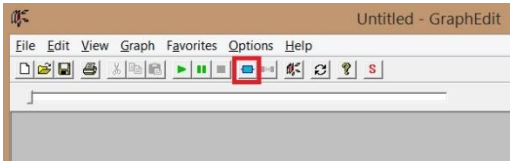
1130 Cadillac Ct., Milpitas, CA 95035, USA  
Phone: +1-408-263-0988  
Fax: +1-408-217-1960  
Email: [sales@leopardimaging.com](mailto:sales@leopardimaging.com)  
Website: [www.leopardimaging.com](http://www.leopardimaging.com)

## ❖ GraphEdit

- 1) Download GraphEdit from link below.

<http://www.videohelp.com/tools/GraphEdit>

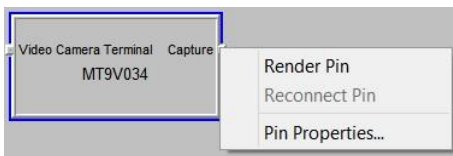
- 2) Uncompress the package.
- 3) Open GraphEdit after connecting the camera to PC. And click “Insert a filter”.



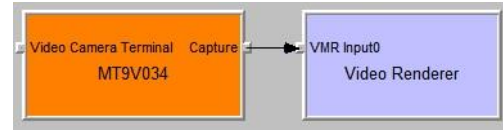
- 4) Select the camera device and click “inset filter”.



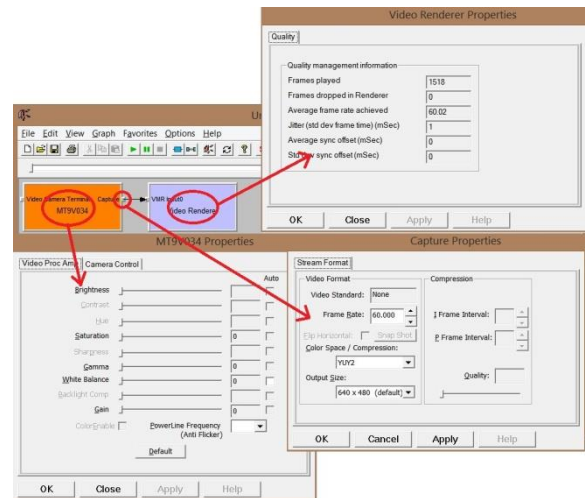
- 5) Right click “Capture”, then click “Pin Properties” to choose a resolution.



- 6) Right click “Capture”, then click “Render Pin”.

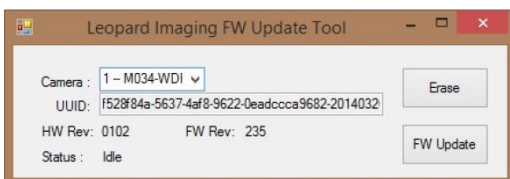


- 7) Click “Play the graph”. Video window will pop up.



## Firmware Update

- 1) Re-connect the USB camera.
- 2) Open “LP\_USB3\_FirmwareUpdateTool.exe” which is in the “CameraUSB30\_x\_x.zip” package.



- 3) Click “FW Update” and select the .lif file.
- 4) Once the Firmware update is completed, the status will be updated as “Program Succeeded”. Please re-plug the camera before viewing the streaming.

**Note:** If the driver installation is not successful, and the “FW Update” button is not available any more, please check whether there’s a “WestBridge” under device manager. The driver of “WestBridge” can be downloaded from the link below and updated manually. After the driver is installed correctly, please repeat the firmware update procedure.

[https://www.dropbox.com/s/2tq036z766ct60f/WestBridge\\_driver.zip](https://www.dropbox.com/s/2tq036z766ct60f/WestBridge_driver.zip)

To update the driver manually:

- a. Right click on “WestBridge” and select Update Driver Software.
- b. Choose browse my computer for driver software.
- c. Click Browse, locate the driver at the downloaded and unzipped folder. (C:\temp\driver\bin\ for example)
- d. Click next and complete the installation process.



Leopard Imaging Inc.

1130 Cadillac Ct., Milpitas, CA 95035, USA  
Phone: +1-408-263-0988  
Fax: +1-408-217-1960  
Email: sales@leopardimaging.com  
Website: www.leopardimaging.com