



LEOPARD IMAGING INC

LI-OV10635-SER

Data Sheet

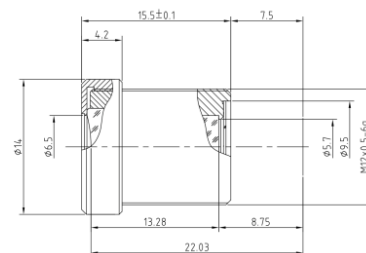
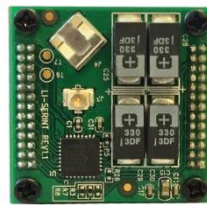
Key Features

- OmniVision OV10635 WXGA HDR Image Sensor
- Optical format: 1/2.7"
- Active pixels: 1280H x 800V
- Pixel size: 4.2 um x 4.2 um
- Support WDR(Wide Dynamic Range)
- Color camera, Rolling shutter
- Single Coax Cable transmit up to 15 meter PoC(Power over Cable)
- 2 Boards are stacked
- Power consumption: 200mA @ 5V
- Weight: 18 g
- Part#: **LI-OV10635-SER**



Lens Spec

- Model: M13B0618WR5
- Image format: 1/3"
- Focal length: 6.0 mm
- Aperture, F/#: 1.8
- Built in 650nm IR cut filter
- FOV (D/H/V): 60 ° / 48 ° / 34.5 °
- Mount: M12 x 0.5 – 6g



Applications

- Machine Vision
- Medical Camera
- Automotive Camera
- Scientific Camera

Interface

- Part#: U.FL-R-SMT(10)
- Connector Style: U.FL
- Connector Type: Jack, Male Pin
- Fastening Type: Snap-On



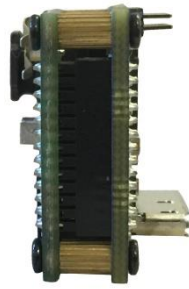
Leopard Imaging Inc.

1130 Cadillac Ct., Milpitas, CA 95035, USA
Phone: +1-408-263-0988
Fax: +1-408-217-1960
Email: sales@leopardimaging.com
Website: www.leopardimaging.com
www.leopard-security.com

LI-TESTER-NV

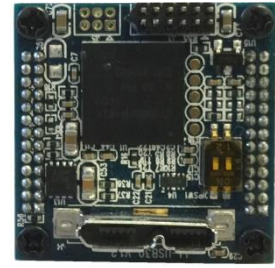


Front View



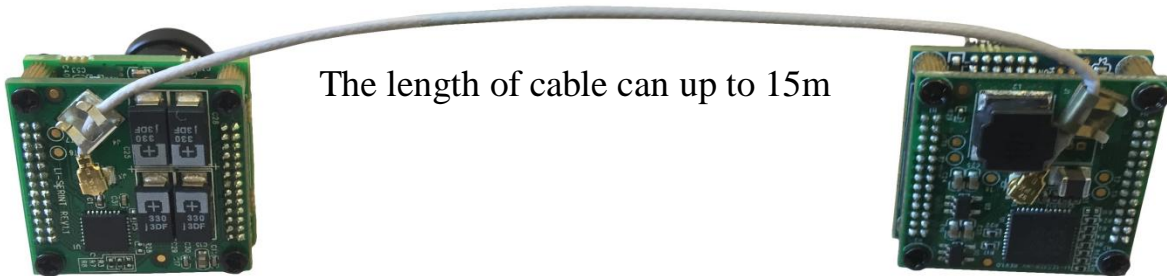
Side View

LI-USB30-CNTL



Back View

LI-OV10635-SER can connect to USB 3.0 EVA module LI-TESTER-NV as a USB 3.0 camera. Part#: **LI-USB30-OV10635-SER**



The length of cable can up to 15m

Key Features

- USB 3.0 Super Speed support
- YUV output without compression
- UVC compliance
- USB 2.0 backwards compatible
- Provide customization services
- USB +5VDC powered device
- Support WDR
- Weight: 30 g
- Single Coax Cable transmit up to 15 meter PoC(Power over Cable)

SDK Supported

- Camera Tool Source Code in C#
- Capture & Display
- Register access



LI-USB30-OV10635-SER SPEC

General Behavior		
Video Resolution @ Frame rate	1280 x 800 @ 30 fps, WDR 1280 x 720 @ 30 fps, WDR 640 x 480 @ 30 fps, WDR	
Sensitivity	TBD	
Dynamic range	10 bit	
Interface (Optical)		
IR cut filter (on lens)	Yes, 650nm IR cut filter	
Sensor specification	OmniVision OV10635 WXGA HDR Image Sensor	
Shutter	Rolling	
Format	1/2.7"	
Resolution	H:1280, V:800	
Pixel size	H:4.2 um, V: 4.2 um	
WDR	Support WDR (Wide Dynamic Range)	
Lens mount	M12 lens mount support	
M12 Lens	6.0 mm (default), 4.2 mm, 2.6 mm Focal Length	
Interface (Electrical)		
Interface	USB 3.0	
Supply voltage	USB 3.0 +5 VDC power source	
Current consumption	Approx. 390 mA at 5 VDC	
Interface (Mechanical)		
Dimensions	LI-USB30-OV10640	L: 26 mm, W: 26 mm, H: 35 mm
	LI-TESTER-NV	L: 26 mm, W: 26 mm, H: 12 mm
Mass (two modules)	30 g	
Adjustment (Manual)		
Shutter	TBD	
Gain	TBD	
Adjustment (Auto)		
Shutter	TBD	
Gain	TBD	
Environmental		
Max. temperature (operation)	0 °C ~ 50 °C (32 °F~ 122 °F)	
Max. temperature (storage)	-20 °C ~ 80 °C (-4 °F~176 °F)	
Max. humidity (operation)	20 % ~ 80 %, relative, non-condensing	
Max. humidity (storage)	20 % ~ 80 %, relative, non-condensing	



Leopard Imaging Inc.

1130 Cadillac Ct., Milpitas, CA 95035, USA
 Phone: +1-408-263-0988
 Fax: +1-408-217-1960
 Email: sales@leopardimaging.com
 Website: www.leopardimaging.com
 www.leopard-security.com