



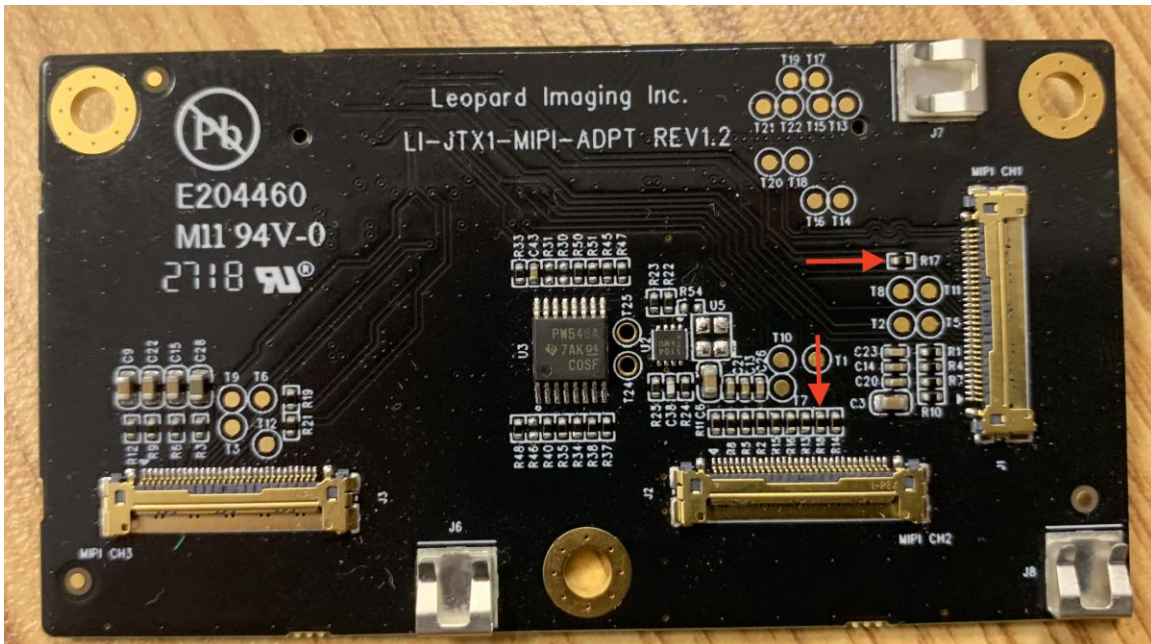
This guide briefly illustrates how to rework the LI-JTX1-MIPI-ADPT REV1.2 board for Xavier platform.

After the rework, this board can be used on below platforms.

#	Platform	Support Cameras
1	Jetson AGX Xavier	Two 4-lane cameras (J1 and J2) or Three 2-lane cameras
2	Jetson TX2	Support three 4-lane or 2-lane cameras
3	Jetson TX1	Support three 4-lane or 2-lane cameras

Rework procedure:

Remove R17 and R18 from the LI-JTX1-MIPI-ADPT board.



Note: Do not remove R19.